

ECD M.O.L.E.® MAP 3

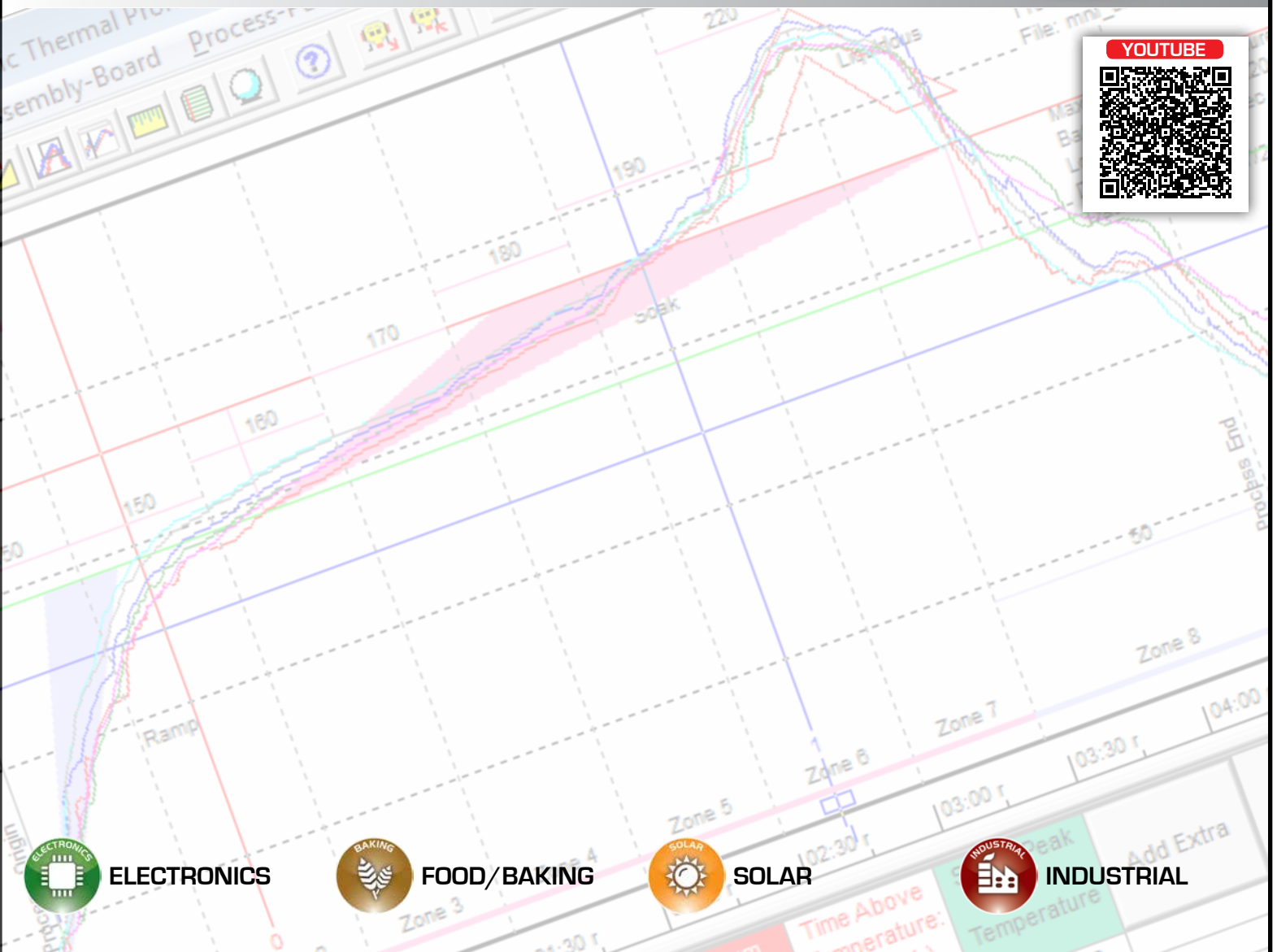
M.O.L.E. MAP

Software

M.O.L.E.® MAP 3, a major new release represents a great leap forward in ECD M.O.L.E.® Thermal Profiling acumen. For years now, MAP has replaced SMG SPC for product profiling with thermocouples and brought a new level of Machine-Assembly-Process optimization to our industry.



www.ecd.com/products/megamolemap



Easy Migration

M.O.L.E.® MAP 3.00 takes the big leap from the separate programs ORSPC & WRSPC without leaving you or your pallet operations behind. With MAP 3.00 any ECD sensor package input to any ECD M.O.L.E.® operates within a unique 'Environment' attuned to the profiling job at hand – all within the same program! 3.00 Instantly switches from one product to the next, and does so automatically with NL2 Riders when used with SuperM.O.L.E.® Gold 2



SuperM.O.L.E.® Gold SPC, WaveRIDER® SPC, and OvenRIDER® SPC are now replaced with MAP Software

More Features

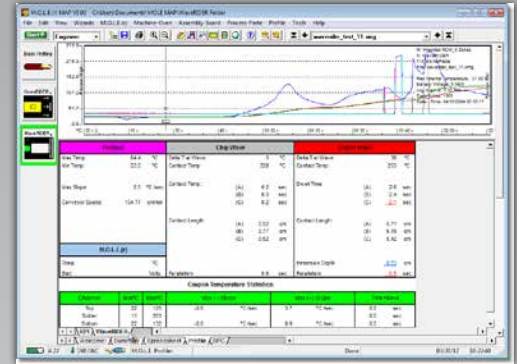
- **With the advent of SuperM.O.L.E.® Gold 2**, the upgrade path to RIDER's operation runs through MAP 3.00.
- **OvenRIDER® and WaveRIDER®** users can switch from ORSPC & WRSPC to MAP right away (SuperM.O.L.E.® Gold year 2000 and newer). The new user interface introduces itself by the new product icon buttons used to select the ECD product. Our programmers have masterfully ported familiar features while reducing the number of screens. The Data Table is located below the Profile and Spreadsheet combines SPC functionality that used to require the Admin Tab.
- **RIDER Data Tables** with spec limits color coding are reprised in the Profile 'Special Tab' corresponding to the Environment selection for the ECD product in use.
- **SPC Setup** no longer requires an "Admin Tab". Specifications are set in the Spreadsheet, giving you a single-screen dashboard. Specification violations appear here as well as in the Profile Templates.
- **Your existing Workbooks** can be accessed for utilization by MAP 3.00 as well.
- **Fully Compatible** with your MDM Libraries, Excel and Text files.
- **Lower and Upper Specification Limits** can be imported for up to 20 parameters that you've been SPC charting.

Adaptable

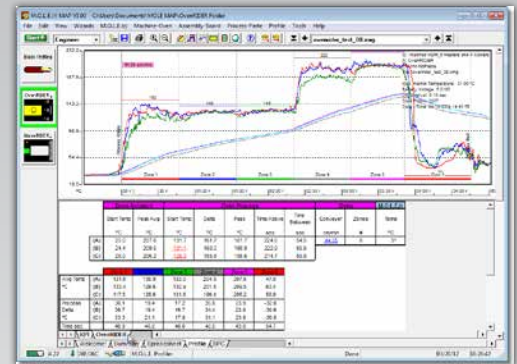
An Environment is a user selectable combination of a M.O.L.E.® and RIDER pairing (or other Sensor product) that efficiently and clearly separates one profiling data acquisition activity from another.

There are 9 such Environments built into MAP 3:

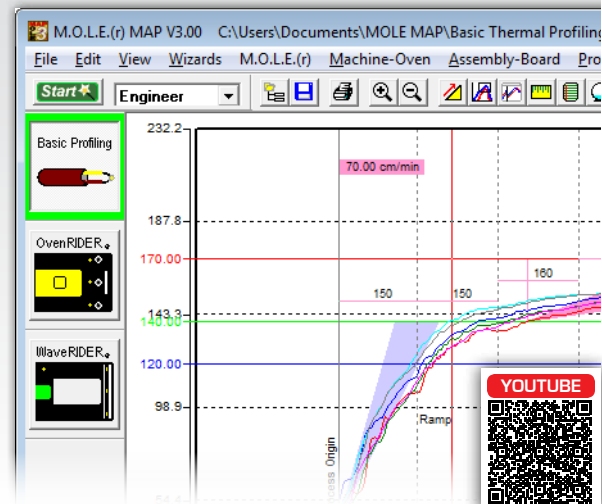
Basic Profiling	MEGARIDER™ PTP®
Breadometer®	MiniM.O.L.E.® rH
OvenRIDER®	VaporWATCH®
OvenCHECKER®	Solar Metalization
WaveRIDER®	



WaveRIDER® SPC and OvenRIDER® SPC features in MAP Software



WaveRIDER® SPC and OvenRIDER® SPC features in MAP Software



Easy-To-Use

5 Start Wizards

Our wizards will get you up and running in no time

Target-10™

- A clear and powerful Green/Red “Go/No-Go” result indication on the M.O.L.E.® itself
- Analog gages in MAP for intuitive ‘quick glance’ data interpretation
- Drill down Data for engineering analysis
- Configurability, so you can delegate decision-making

OK Button

The “OK button” is located right on the MEGAM.O.L.E.® 20, SuperM.O.L.E.® Gold 2 & V-M.O.L.E.® Thermal Profilers which allows the Production Operator to apply the Engineers 4-Parameter decision criteria without the Engineer being chained to the PC.

Auto Play

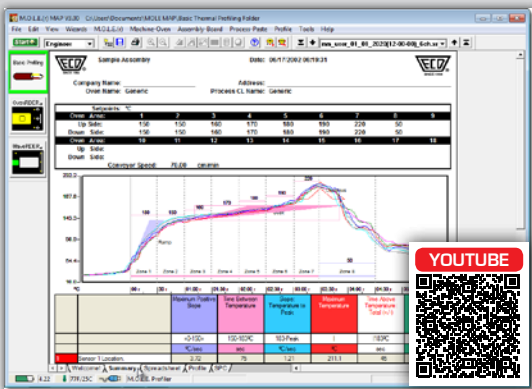
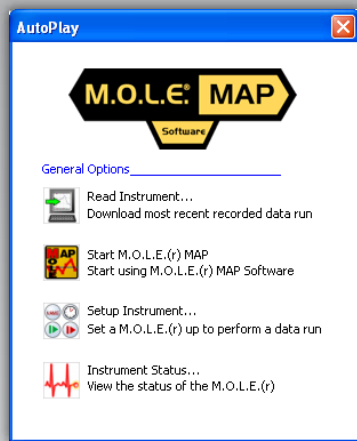
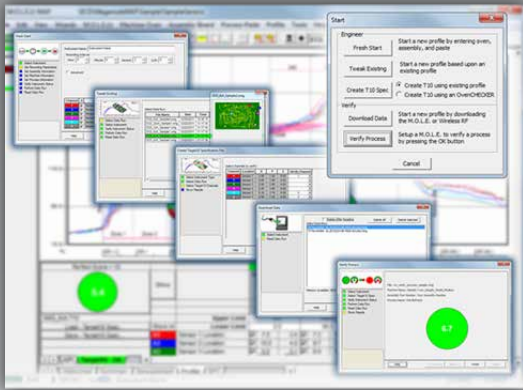
Detect the new M.O.L.E.® when connected to USB. Links plugged in M.O.L.E.® to perform basic tasks like checking M.O.L.E.® status before a run and downloading a profile without opening the full program.

File Sharing

All MAP files can be shared with others directly. Old SMGSPC, OR-SPC, and WRSPC files can be converted to new MAP files. Share multiple .mdm and .xmg profiles outside your intranet with new bulk import feature. Convert old SMG Workbooks into new MAP directories too.

Customizable Reports & Data

Each Profile screen has two data templates, one that’s set for the Environment to save you time plus a KPI tab you may modify in many productive ways. SPC charts, assembly, paste and oven model are at your disposal for selective printing and PDF-ing and the Summary tab’s flexibility is a customer favorite for presentations.



Time Between Temperature	Slope: Temperature to Peak	Maximum Temperature	Time Above Temperature Total (+/-)	Slope: Peak to Temperature	Add
sec	°C/sec	°C	sec	°C/sec	
75	1.21	211.1	45.00	-1.64	
94	1.34	216.1	49.00	-1.47	
87	1.24	209.4	46.00	-1.07	
84	1.22	210.0	47.00	-1.07	
120	1.90	211.7	36.00	-1.31	
110	1.40	213.9	45.00	-1.44	



SPECIFICATIONS

Thermal Profiler Compatibility:

ECD PROFILER MODEL	INPUT CHANNELS	WIRELESS REAL TIME DATA
MEGAM.O.L.E.® 20	20 CHANNELS	BI-DIRECTIONAL RF
SuperM.O.L.E.® Gold 2	6 CHANNELS	BI-DIRECTIONAL RF
SuperM.O.L.E.® Gold	6 CHANNELS	-
V-M.O.L.E.®	3 CHANNELS	-
PTP VP-8	8 CHANNELS (VAPOR PHASE)	RF DIRECT DATA

Support/Training:

Migration to MAP

The development of the M.O.L.E.® MAP software continues and more and more classic users are taking advantage of the many new features of the software.

MAP 101, 201, 301

Learn the operation of your M.O.L.E.® MAP software (Start Fresh, Tweak Existing, Download Data, etc.)

OvenRIDER® and WaveRIDER®

Learn the operation of the OvenRIDER® and WaveRIDER® to easily perform routine operation checks and troubleshooting diagnostics in just a few minutes.

www.ecd.com/ecdu/ ➔

Hardware/Software Requirements

- Operation: Requires access to an SuperM.O.L.E.® Gold /2, MEGAM.O.L.E.® 20, V-M.O.L.E.®, PTP ® VP-8, MiniM.O.L.E. ® rH or Textdata files
- PC System: 300mhz processor minimum, 50 Megabytes hard drive space, 128 Megabytes RAM minimum.
- Operating System: Windows ® XP or Higher
- Software Media: CD ROM
- Display: 1024 x 768 minimum

Patent

7,653,502

Download

www.ecd.com/products/megamolemap ➔

Website

www.ecd.com ➔



ECD North & South America
World Headquarters
4287-B SE International Way
Milwaukie, Oregon 97222-8825 U.S.A.
Tel: +1 503 659 6100/+1 800 323 4548
Fax: +1 503 659 4422
E-Mail: sales@ecd.com | Web: www.ecd.com

ECD Asia/Pacific
Singapore
Mobile: +65 9692 6822
Fax: +65 6241 9890
E-Mail: ecd.asia@ecd.com

ECD Europe/Africa/Middle East
Mobile: +48 512 659 100
E-Mail: ecd.europe@ecd.com

• Top rated customer support • No-cost ECD Online Training • Award winning software •